

Product

- Rêve wall faced toilet suite with oval flush button panel
- Rêve wall faced toilet suite with bevel flush button panel

Kohler Code

5231A-00
45290A-00



WELS RATING
(4 Star 3.5L av. flush)

Included Components

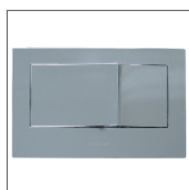
- Rêve toilet pan
- Rêve quiet close toilet seat with metal hinge
- In wall cistern 88mm 4.5/3L
- Fixing brackets and bolts
- Flush button panel
- Floor fixing bolts and anchors
- Vario pan connector

Features

- Choice of bevel or oval flush button panel
- In wall cistern - with support brackets
- Dual flush (4.5/3L)
- Back up shut-off valve located on cistern and accessible through the flush button panel.
- P-trap set out: 185mm
- S-Trap set out: 90mm - 100mm (with vario pan connector)
- Open rim
- Vitreous china

Left side:
Bevel panel

Right side:
Oval panel

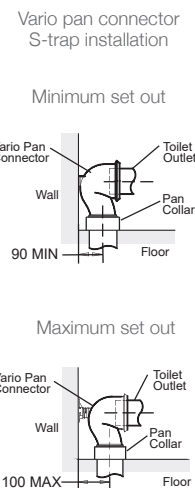
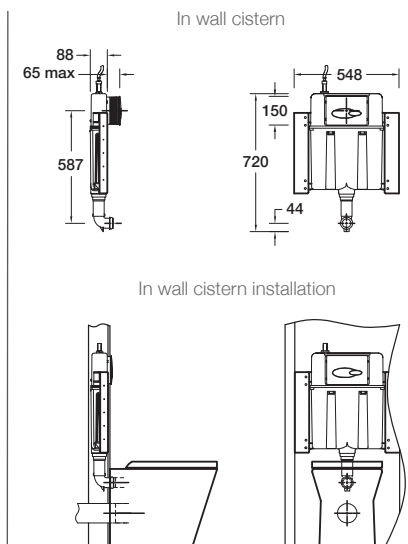
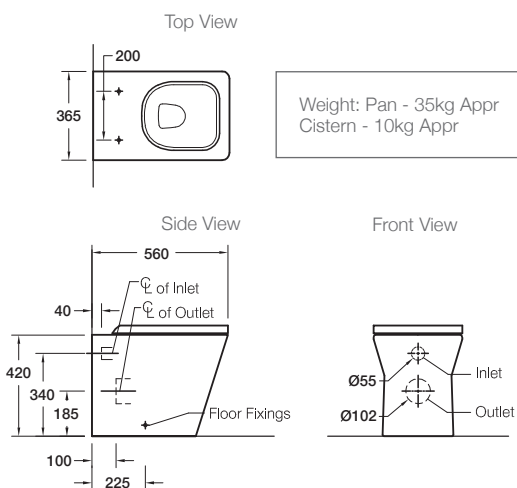


Related Products

- Rêve basins

- Rêve toilets

Technical Details



Installation Notes:

- Water supply pressure range: 20 psi (137 kPa) - 80 psi (551 kPa).
- Can be installed as a P-trap using a straight connector (not supplied) or as an S-trap using the vario pan connector (supplied) and a pan collar (not supplied).
- The in wall cistern is designed to be fixed to 600mm centre studs using 10 wood screws (not supplied).
- In wall cistern support brackets (supplied) are fixed to the studs first, then the in wall cistern (supplied) is fixed to the brackets using bolts (supplied).
- The flush button panel (supplied) can be cut so that it sits flush with the wall.